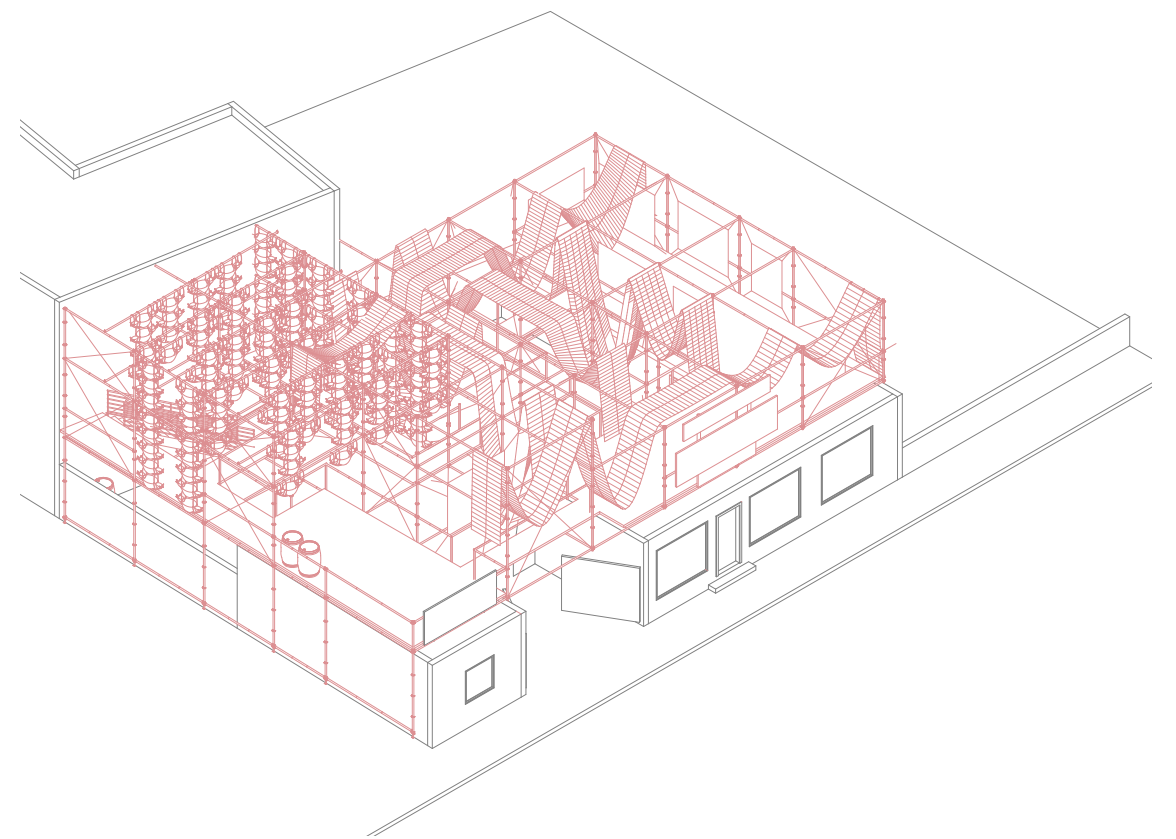
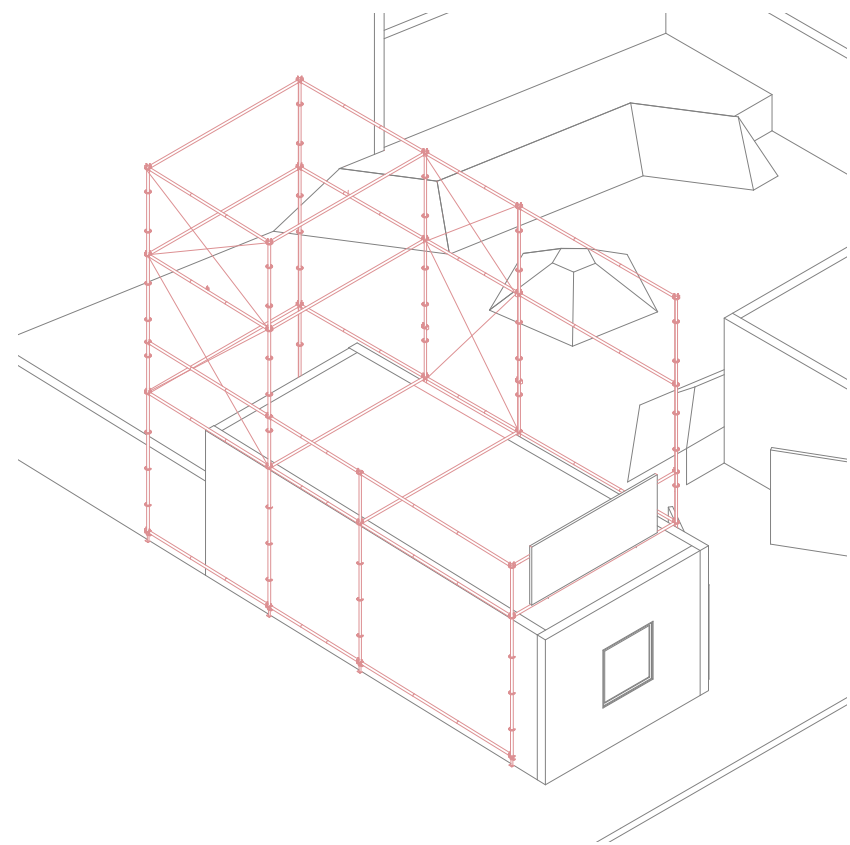
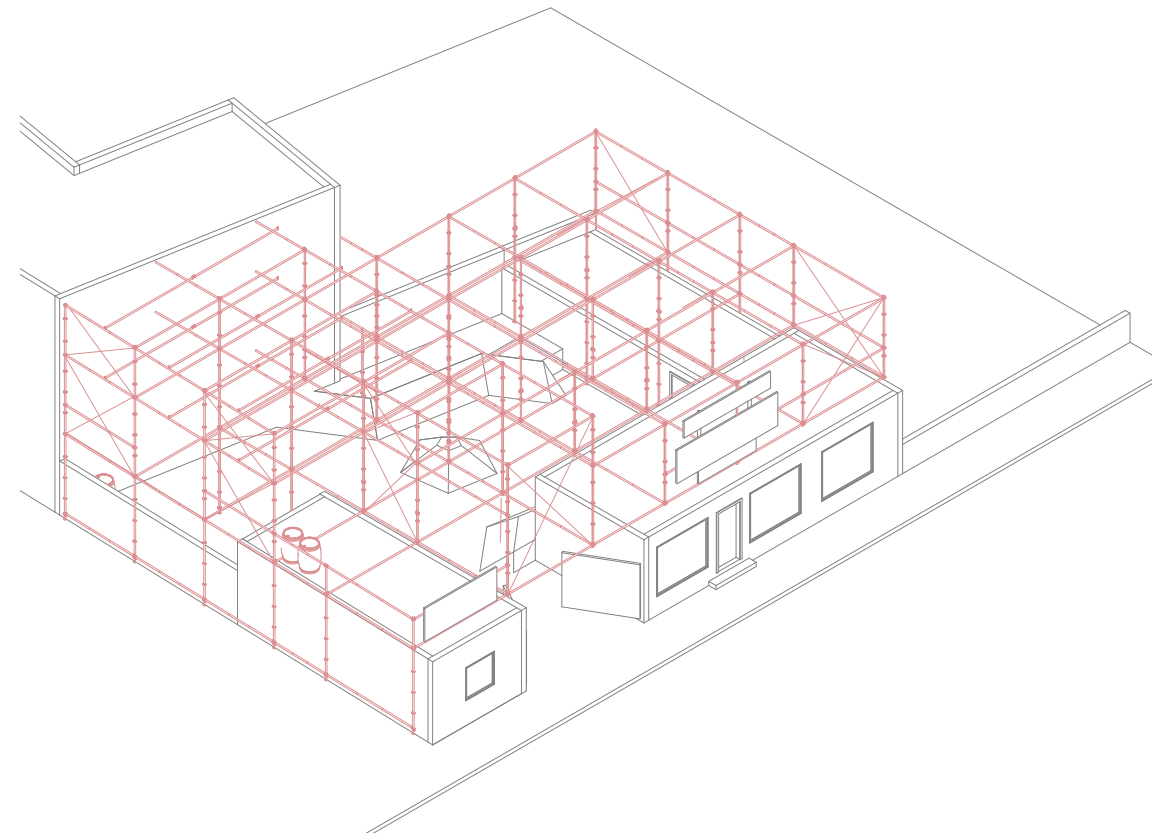
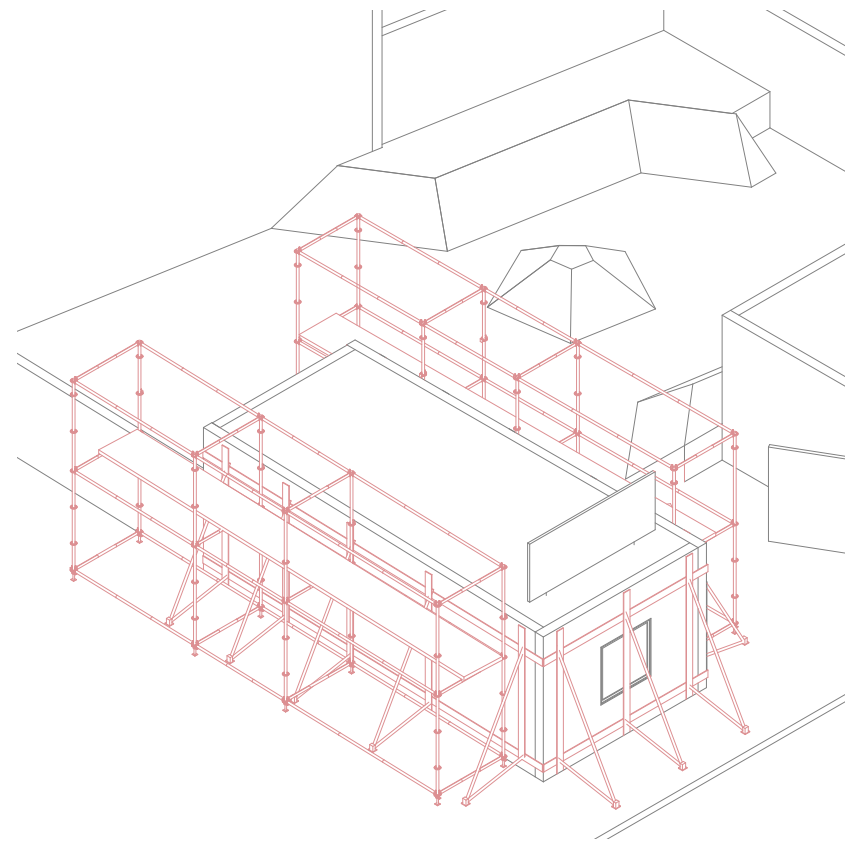


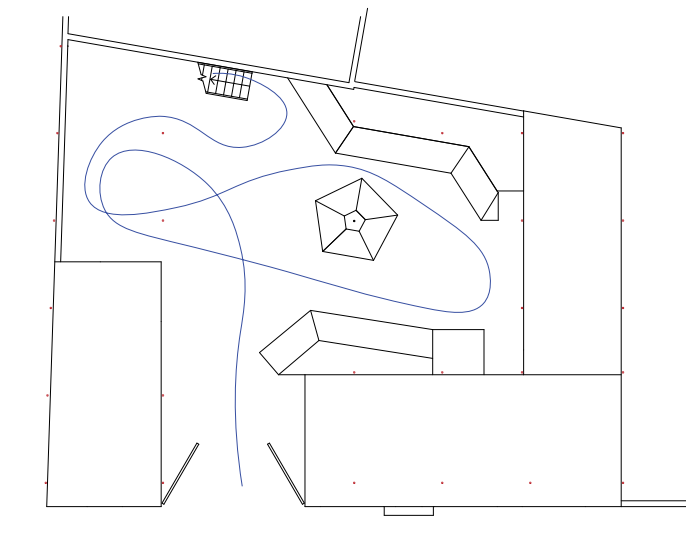
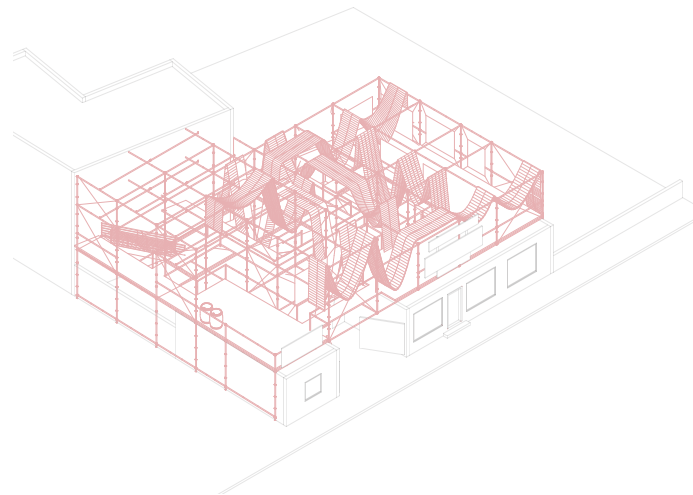
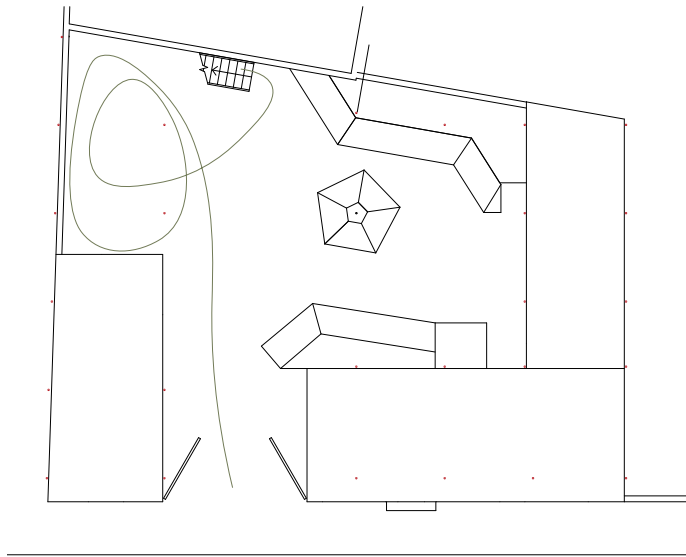
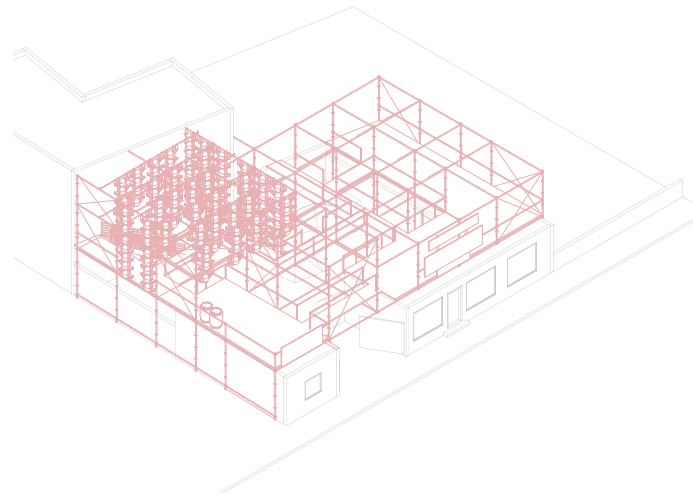
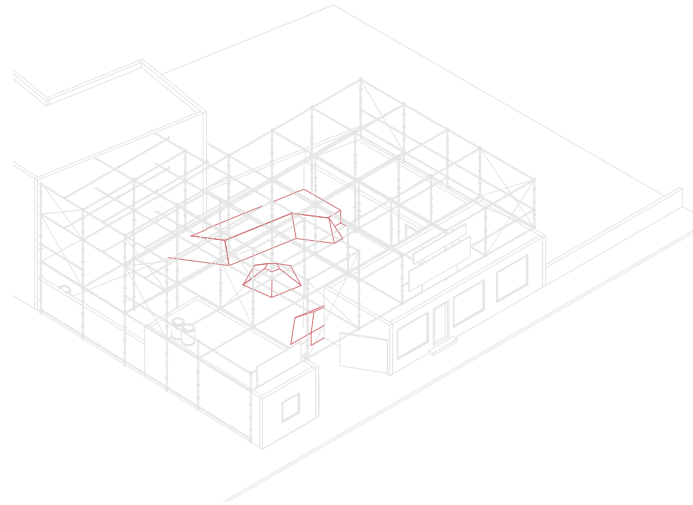




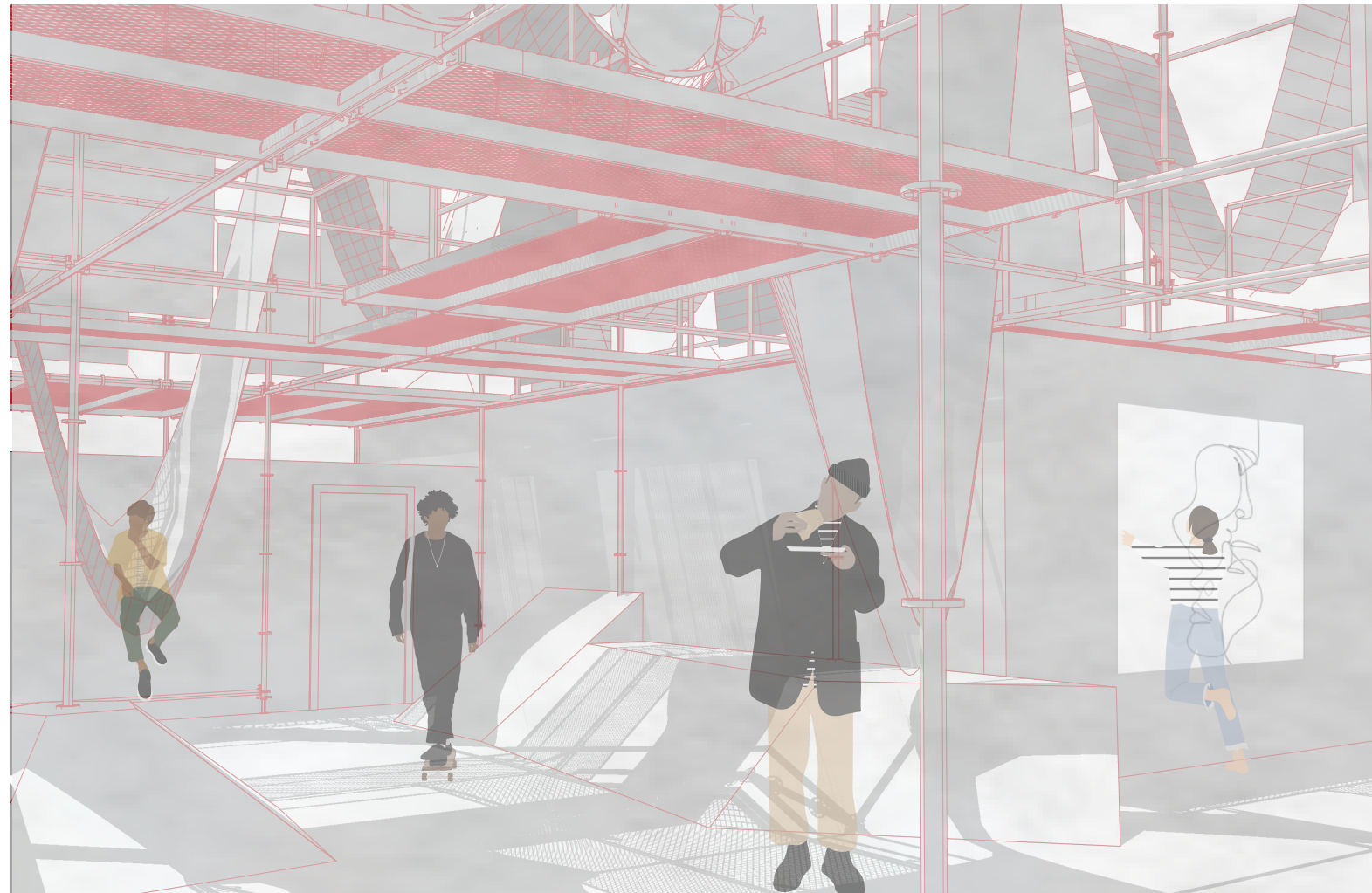
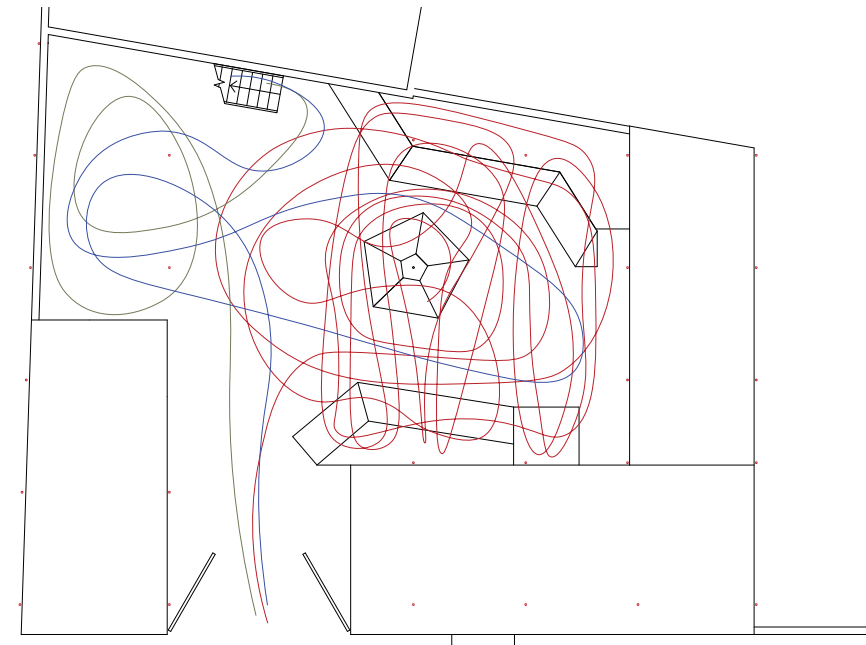
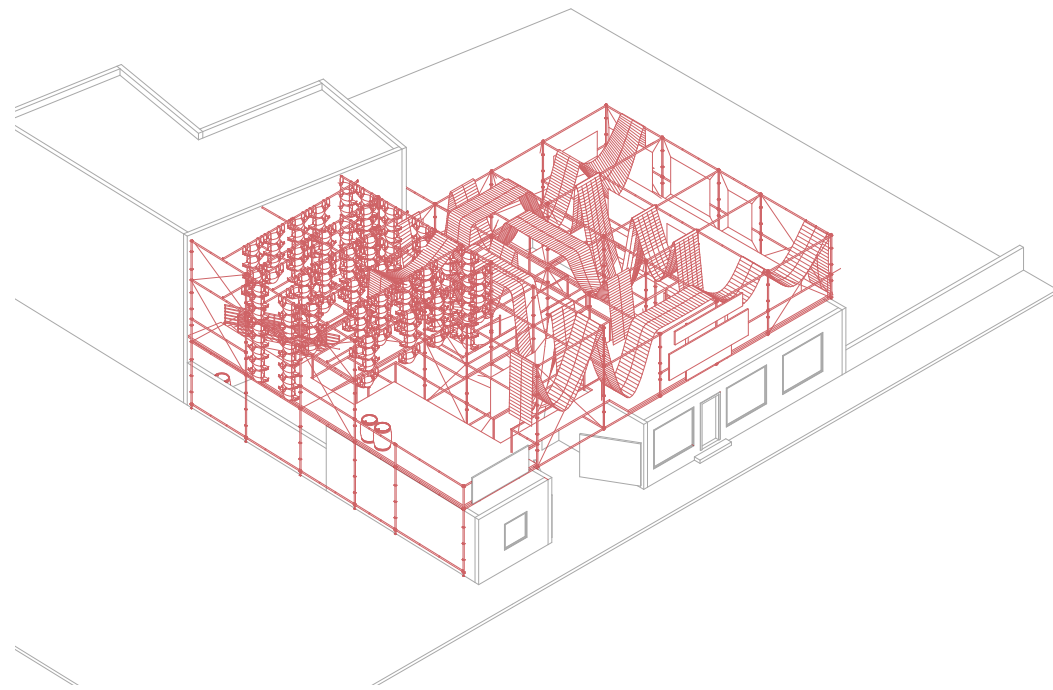
Many buildings in the city of Athens have scaffolding that unintentionally becomes permanent because of the conditions of the structure. The objective for this project was to intentionally make the scaffolding that is used to rehabilitate the existing site, permanent. By re-purposing it, it will have the opportunity to create and support new programs and serve the under-resourced refugee community without being overly costly.



Activity Paths



Combined Activity Paths



This diagram displays the combined paths that different visitors could potentially take depending on the activity they plan on partaking in. These activities include skateboarding, swinging in hammocks, and gardening/cooking.



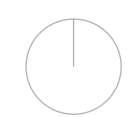
Souzy Tros



Eleonas Camp

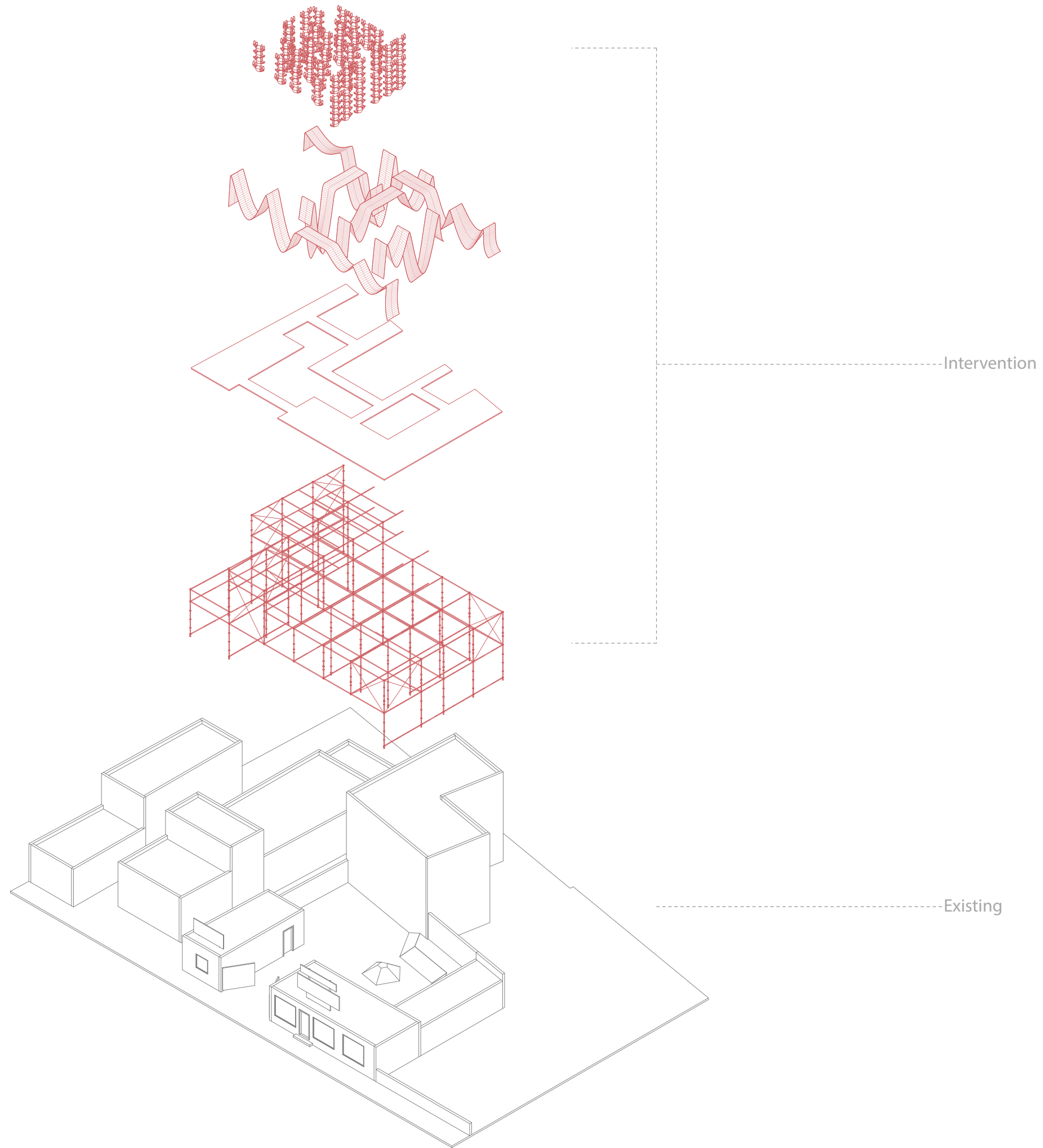


Acropolis of Athens



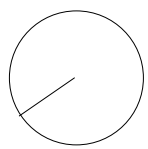
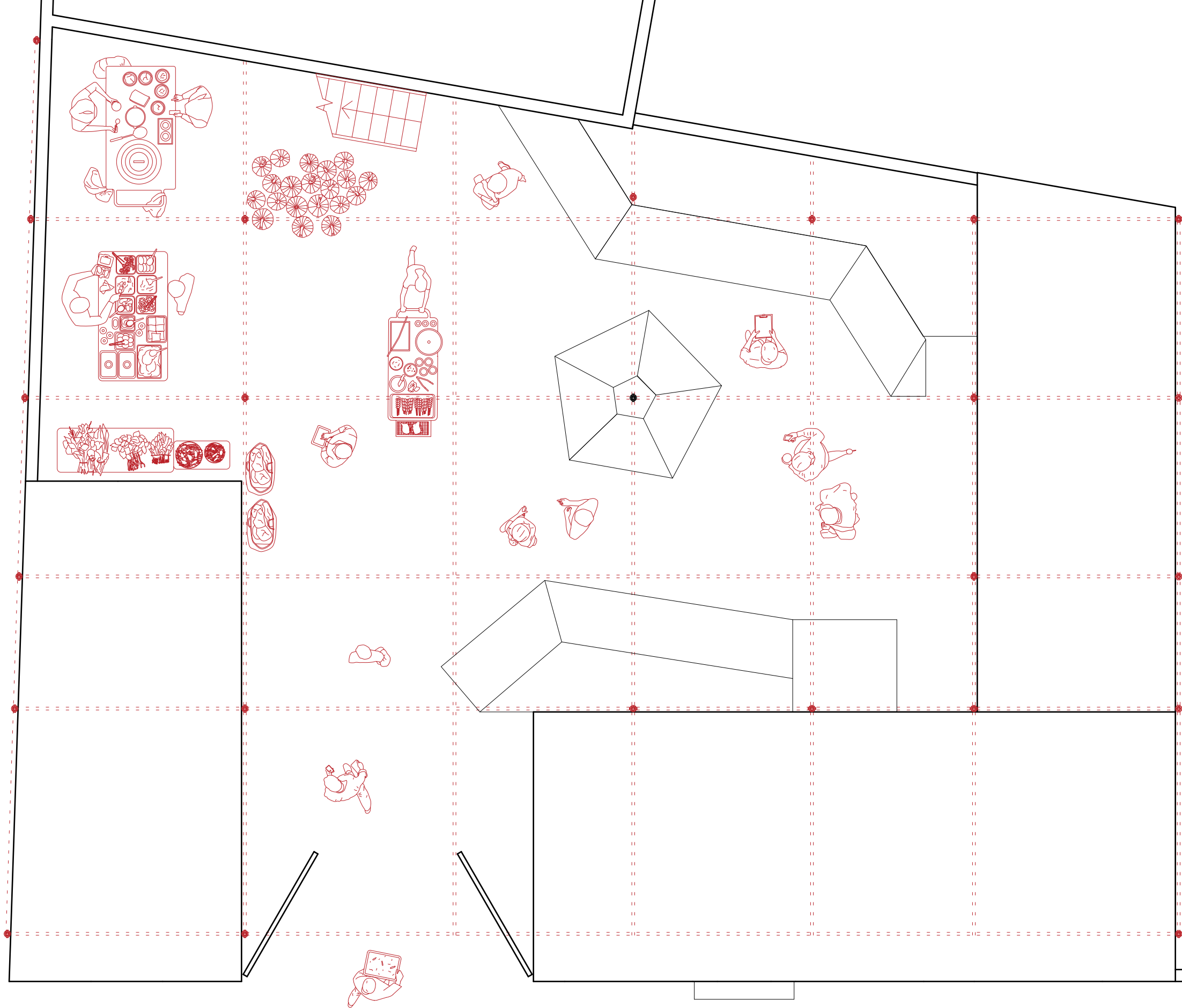
Site Plan

500'

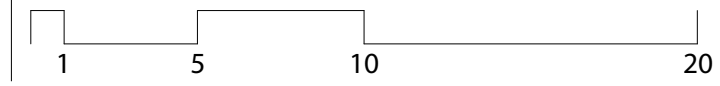


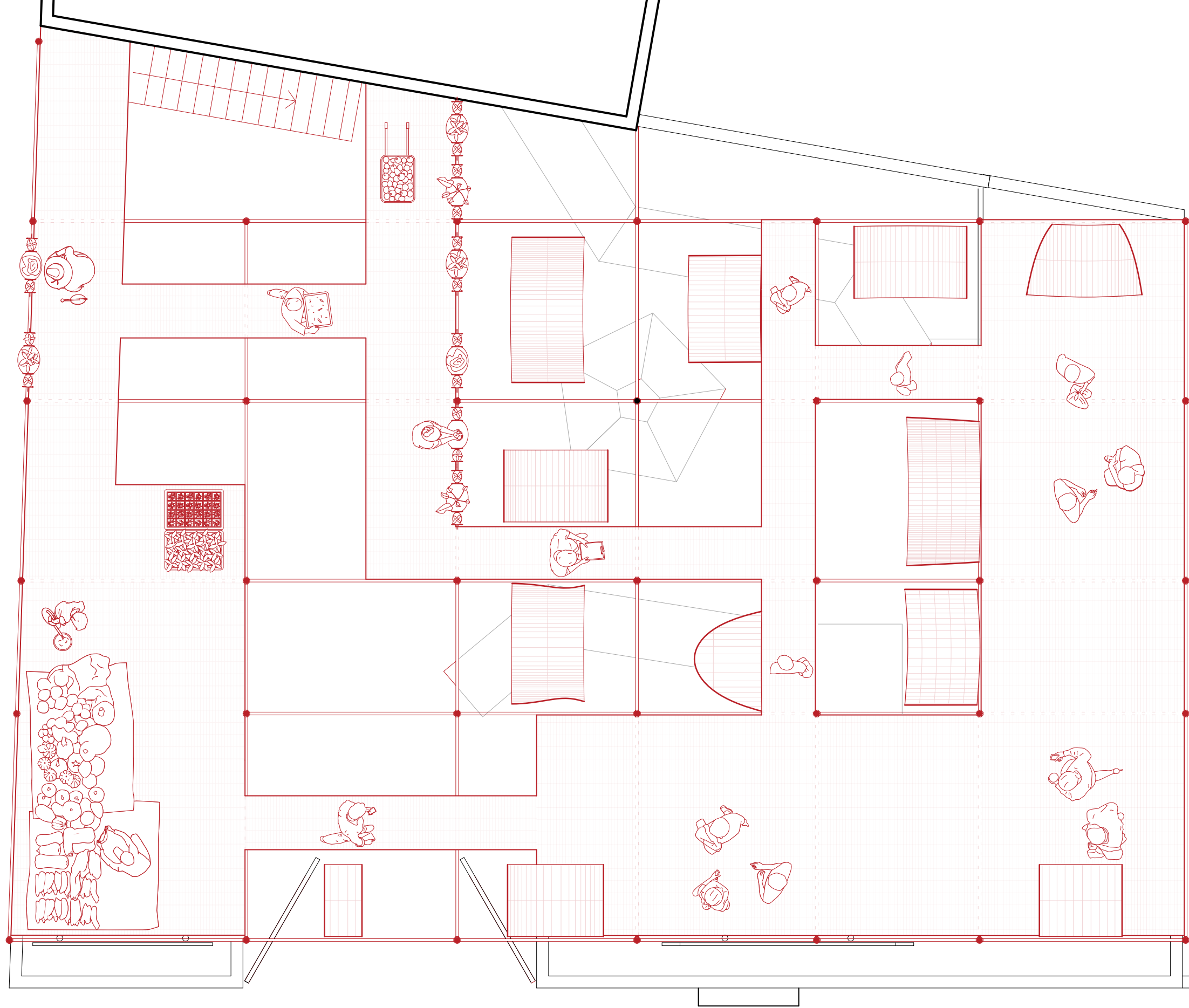


Projected Elevation

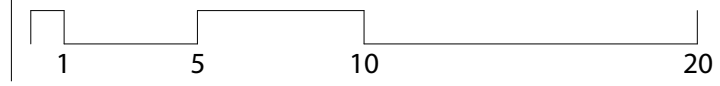


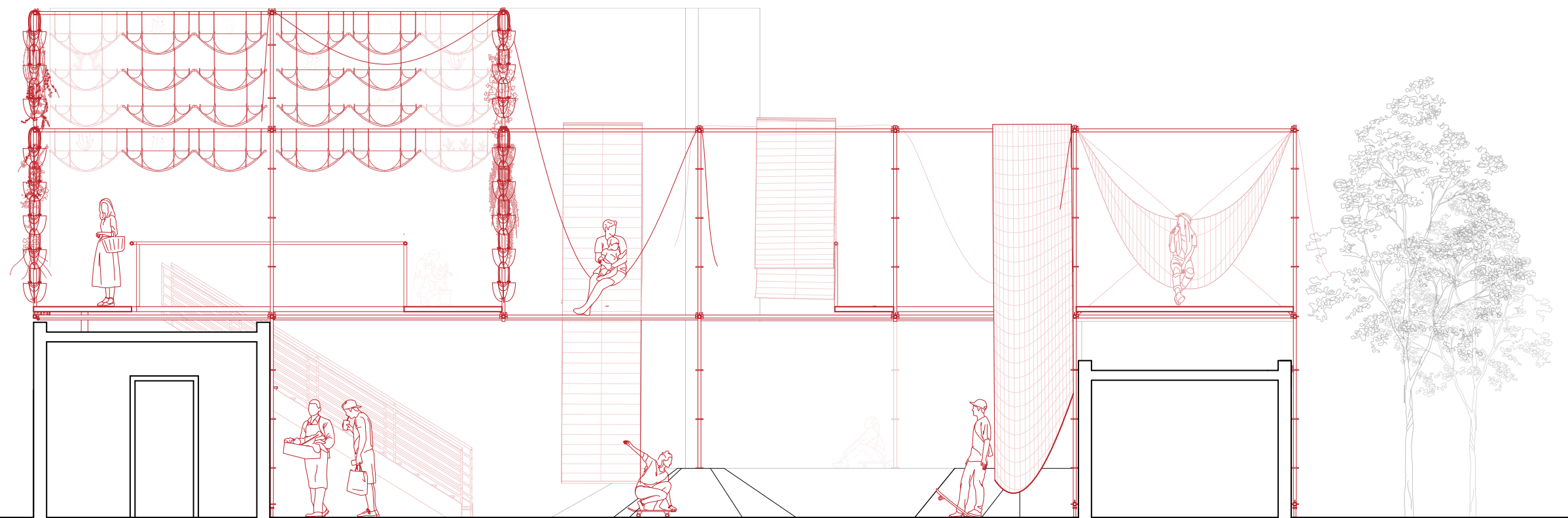
Ground Level



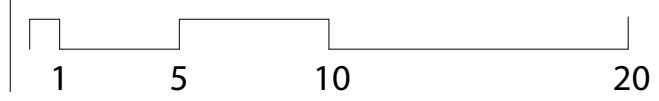


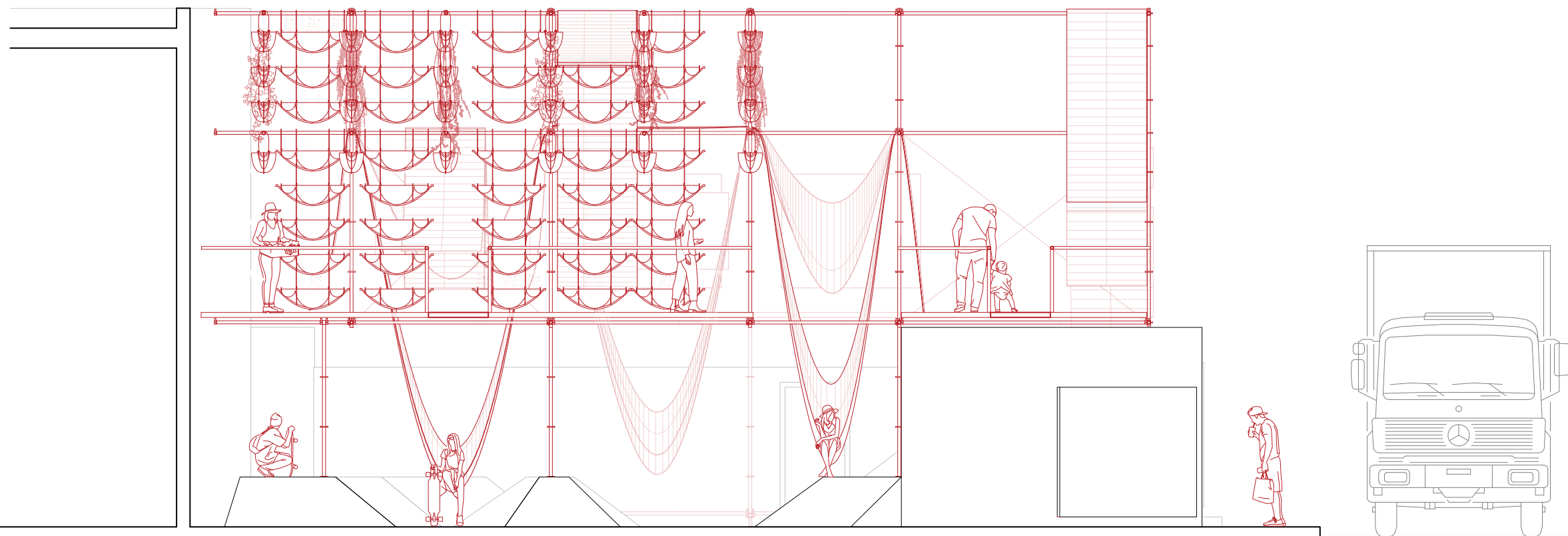
Second Level



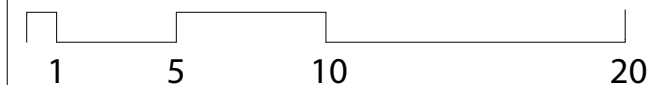


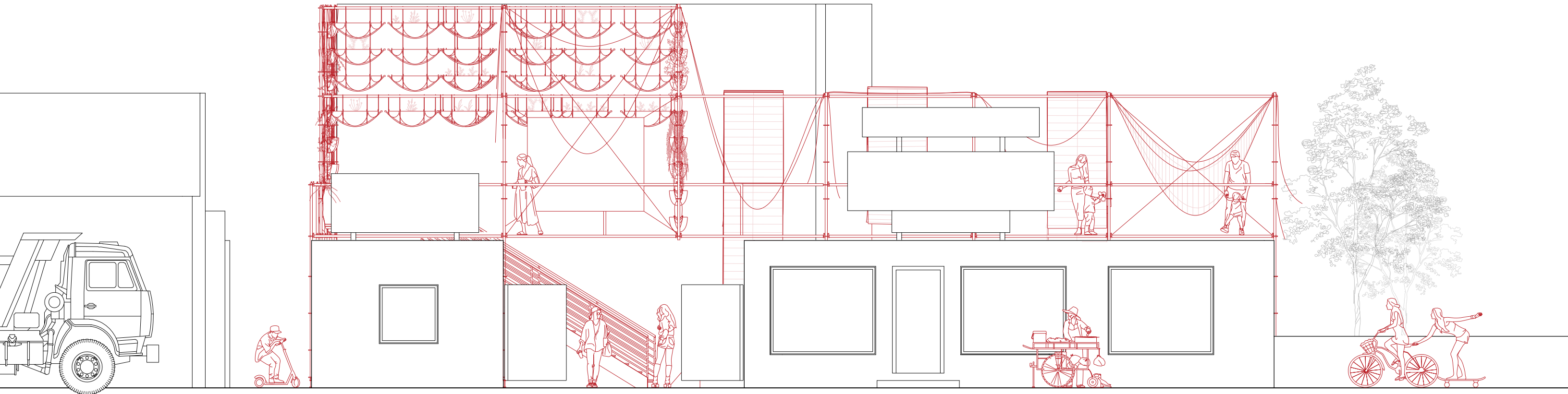
Section A





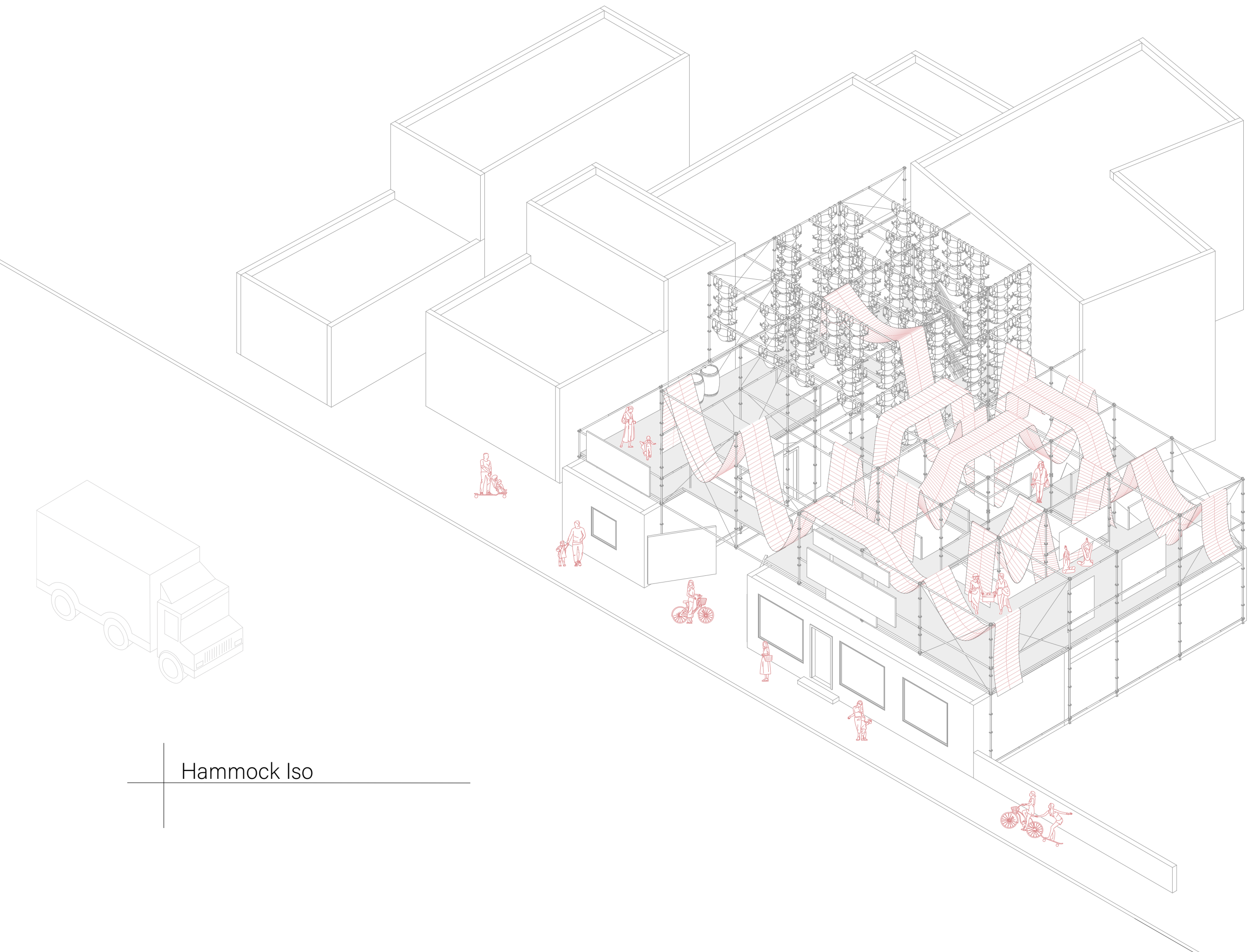
Section B



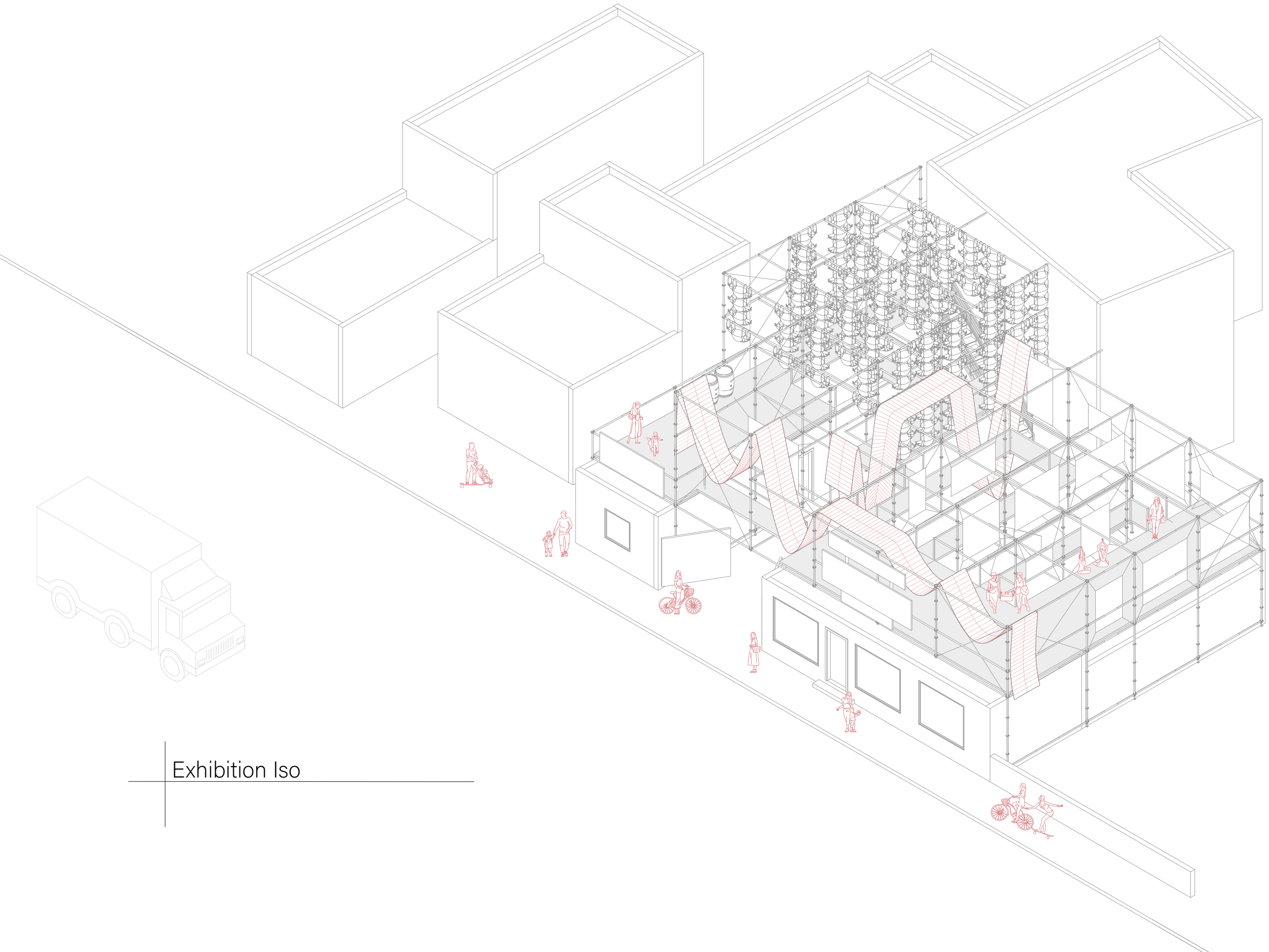


North West Elevation

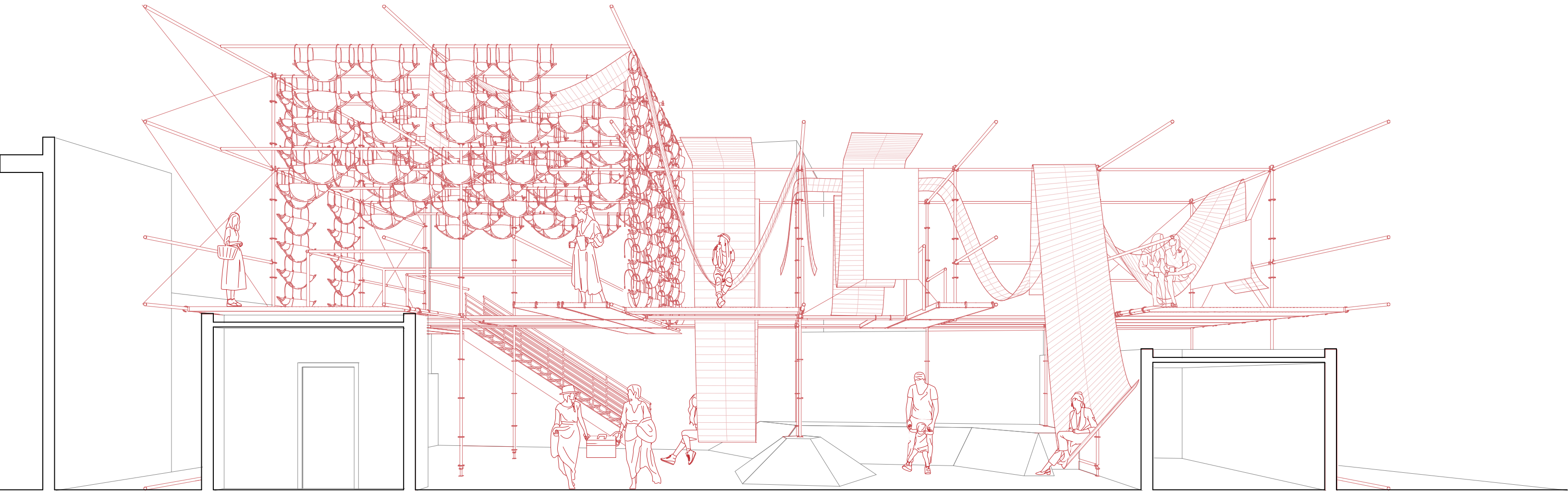
1 5 10 20



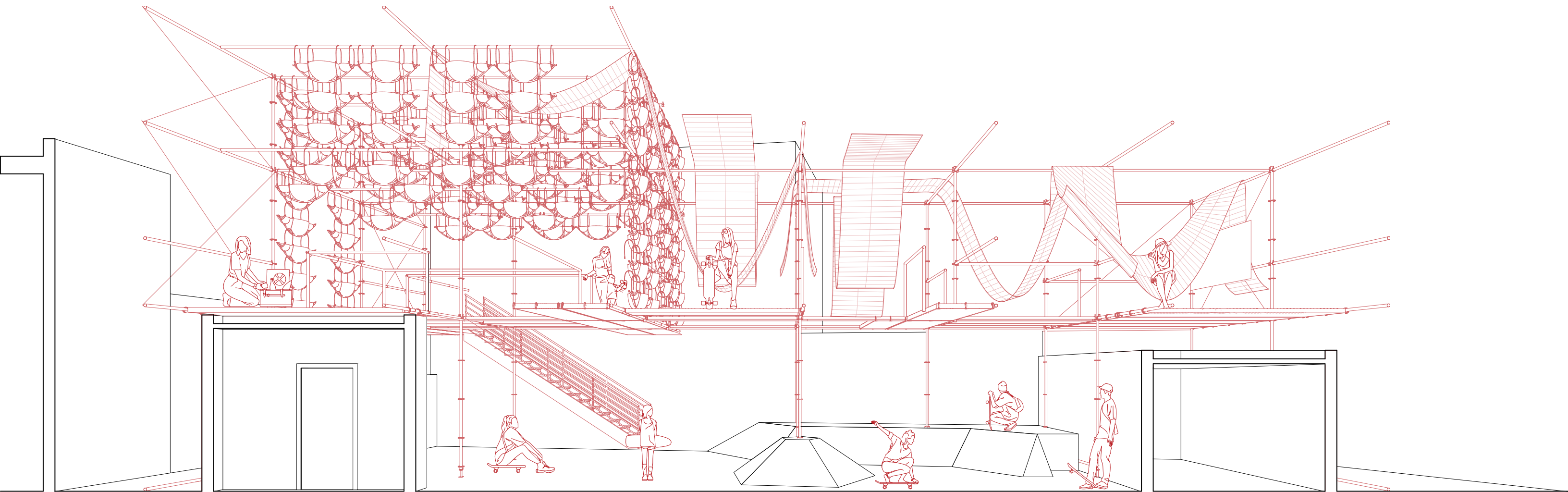
Hammock Iso



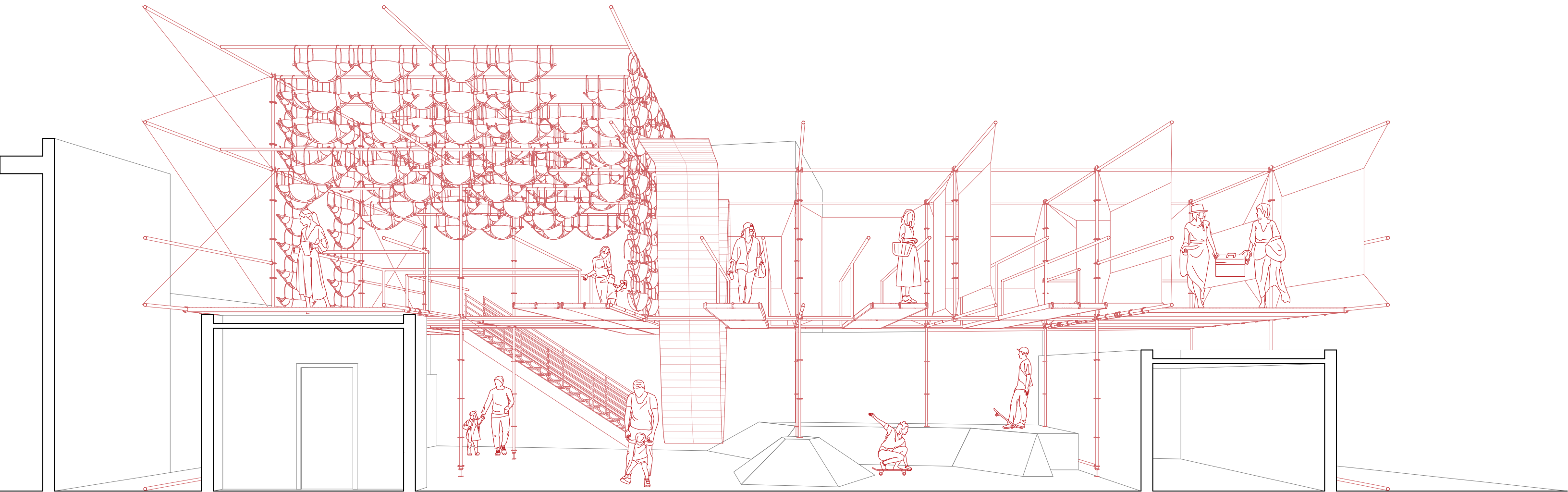
Exhibition Iso



Hammock Section

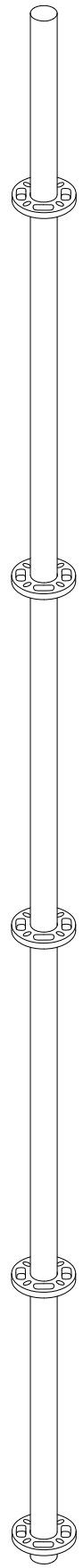


Skate Park Section

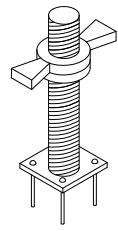


Exhibition Section

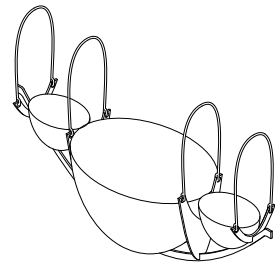
Kit of Parts



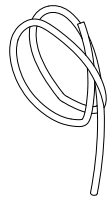
Vertical Pipe with Rosettes
x36



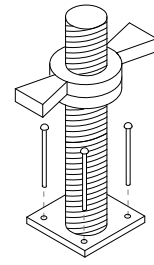
Leveling Jack Screw
x24



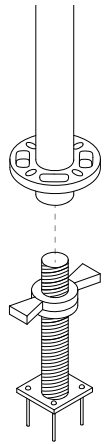
Hanging Planters
x24



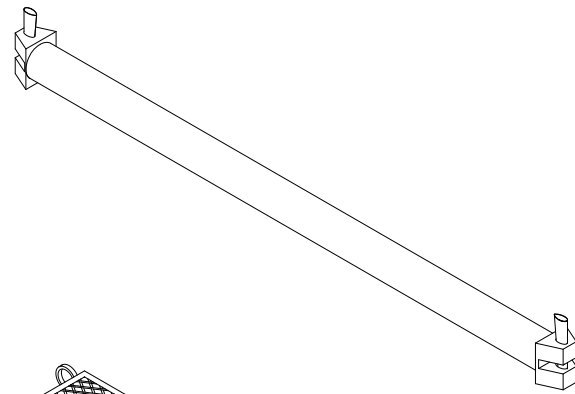
Nylon Rope
145'



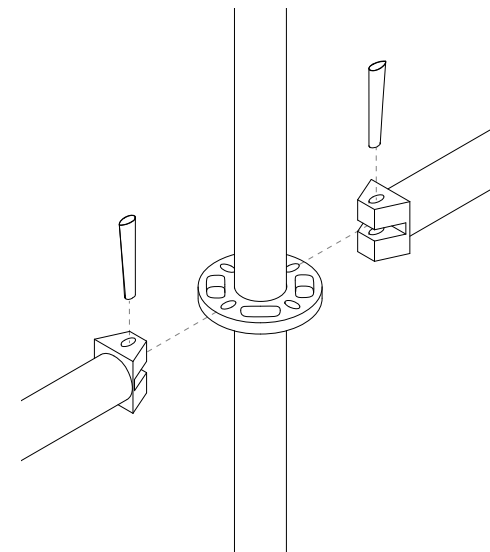
1. Bolt Leveling Jack Screw



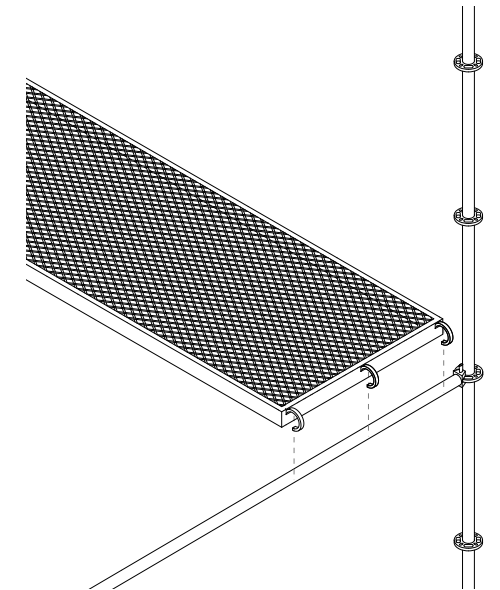
2. Screw on vertical pipe



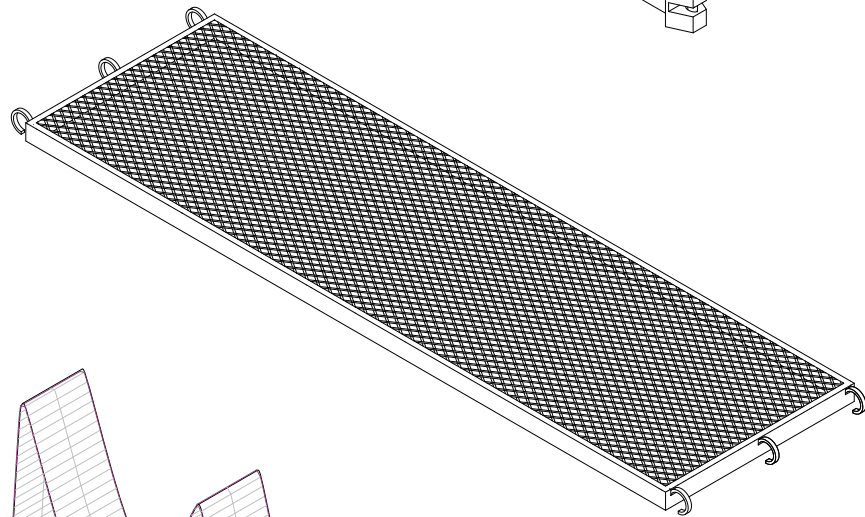
Ledger Pipe with Ledger End
x141



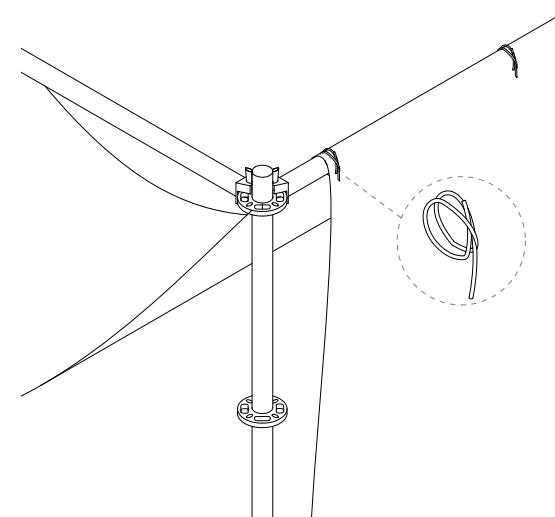
3. Attach ledger pipe to
rosettes



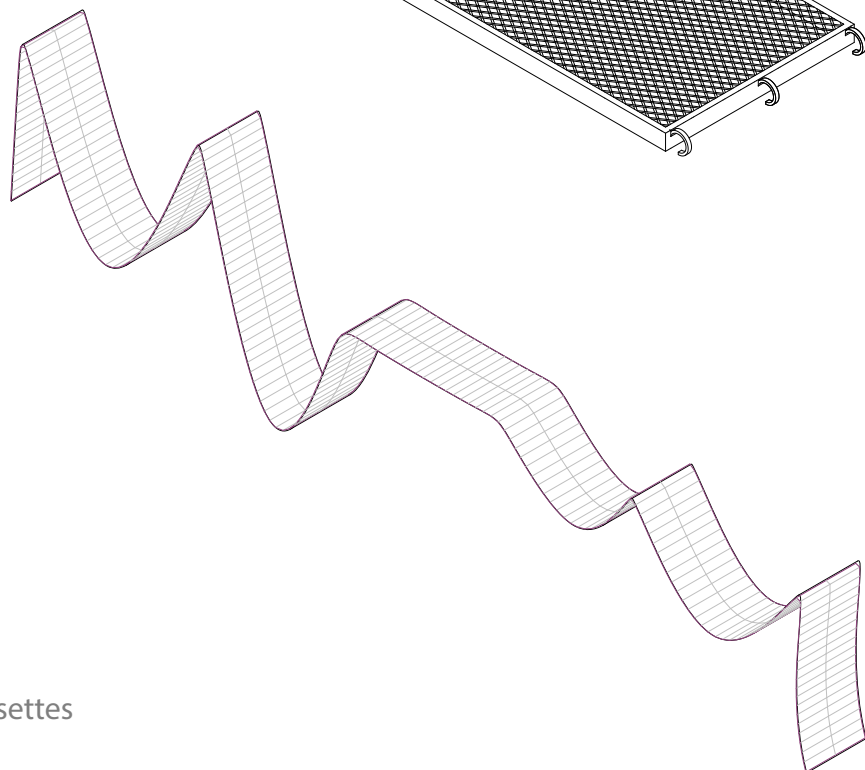
4. Hook platform walkways
to ledger pipe



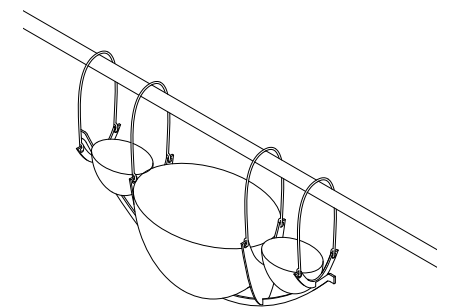
Platform Walkways
x50



5. Fasten woven fabric to
ledger pipe with clove hitch
knot



Woven Fabric
x6



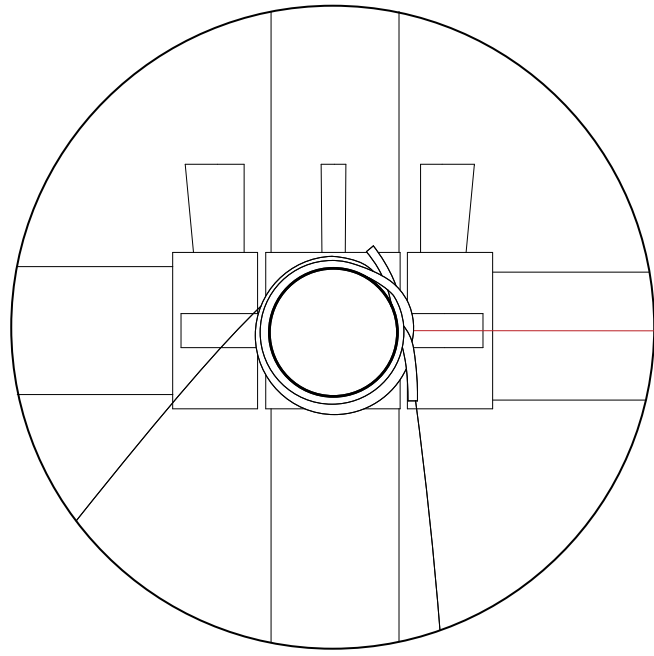
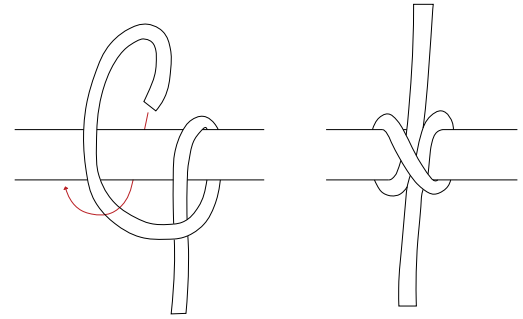
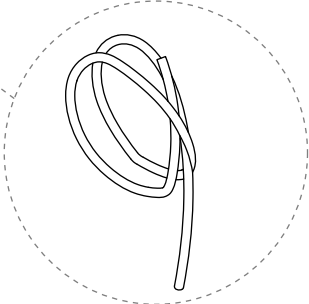
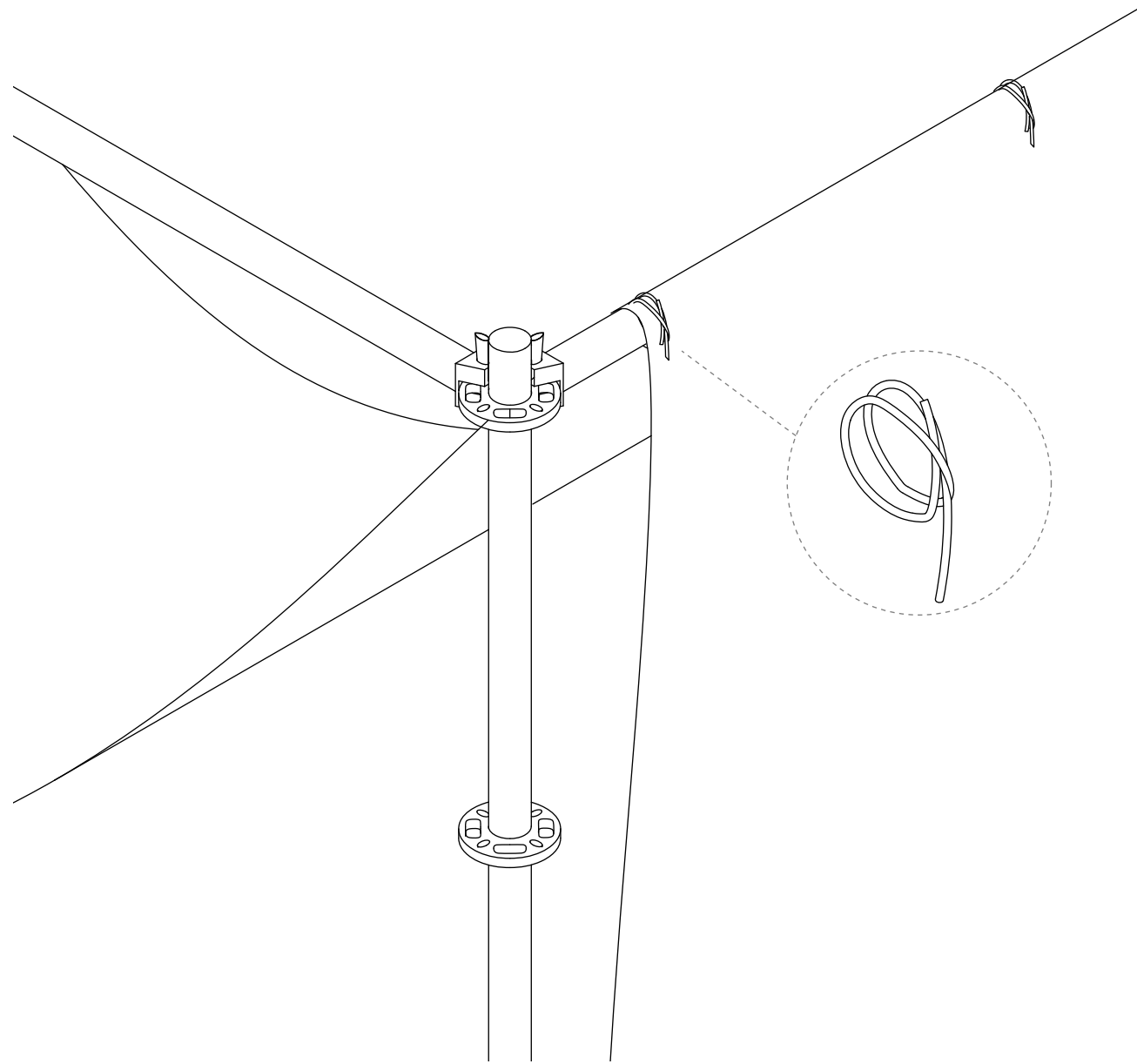
6. Fasten hanging planters to
ledger pipe with nylon rope

Fabric Makeup

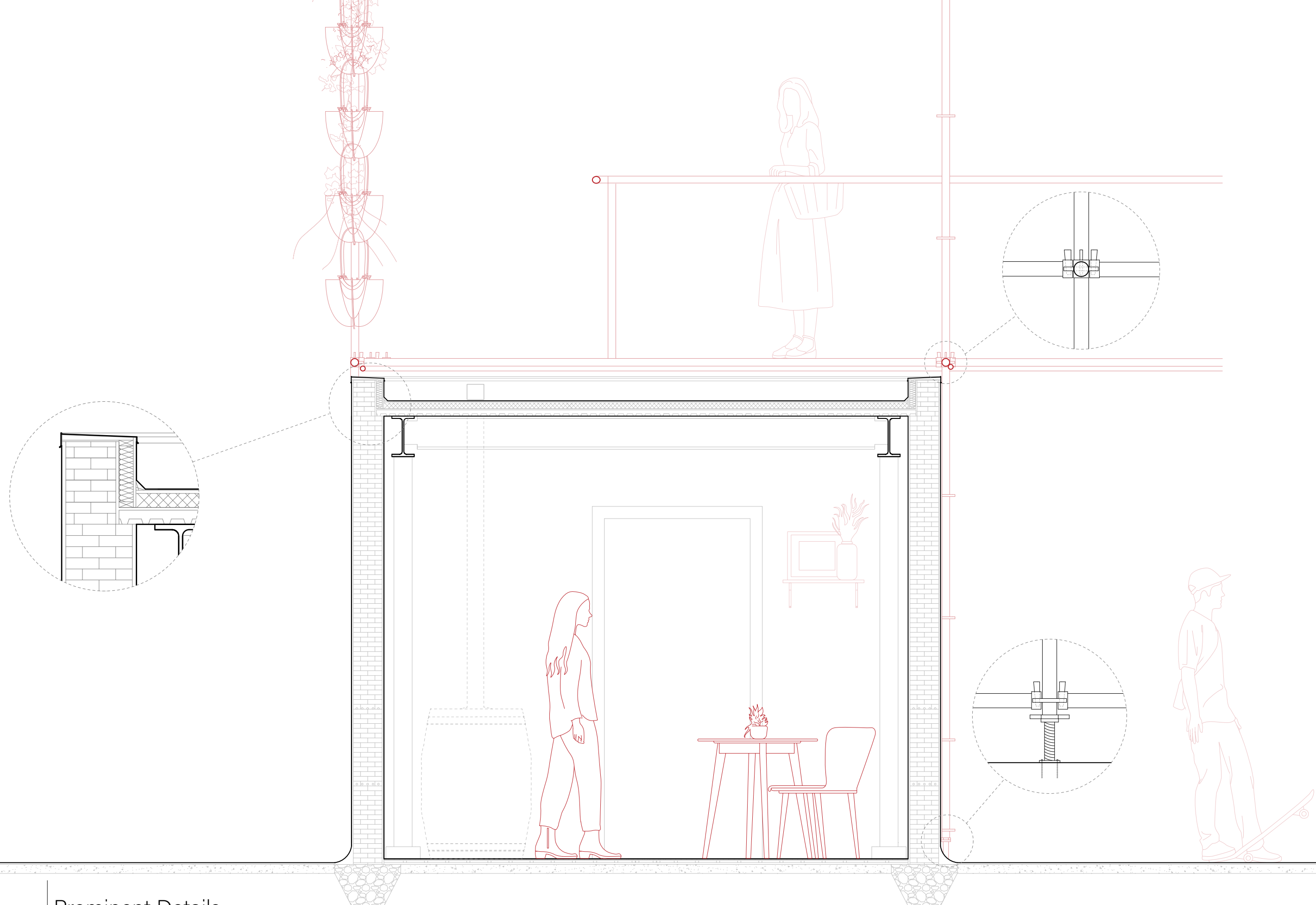


The woven robins of the project were developed after making multiple woven samples. These samples gave incite on how the robins can be woven as well as attached to the scaffolding structure. This also allows the refugees to draw upon their different cultures and integrate it into the system.

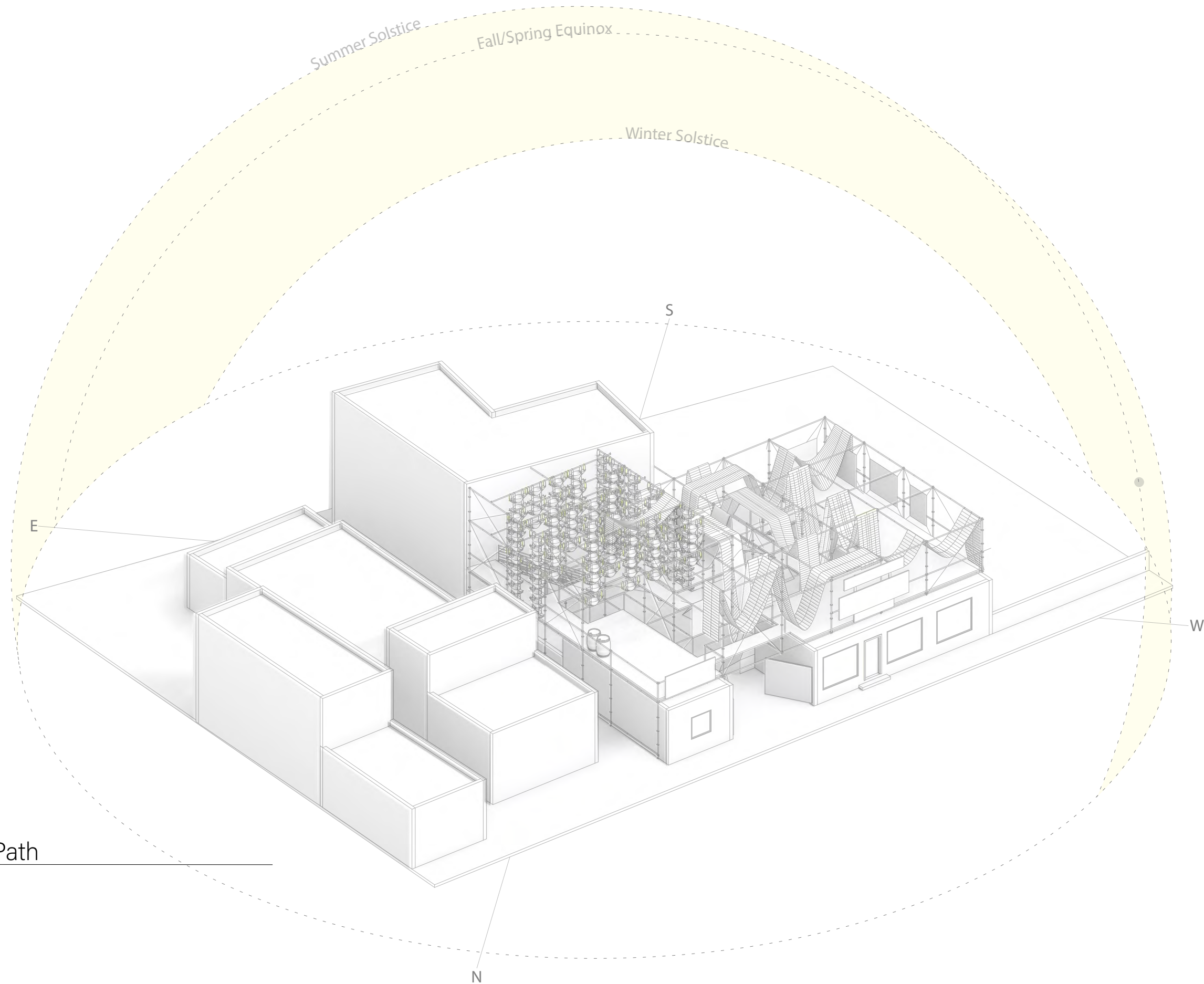




Clove Hitch Knot



Prominent Details



Summer Solstice

Fall/Spring Equinox

Winter Solstice

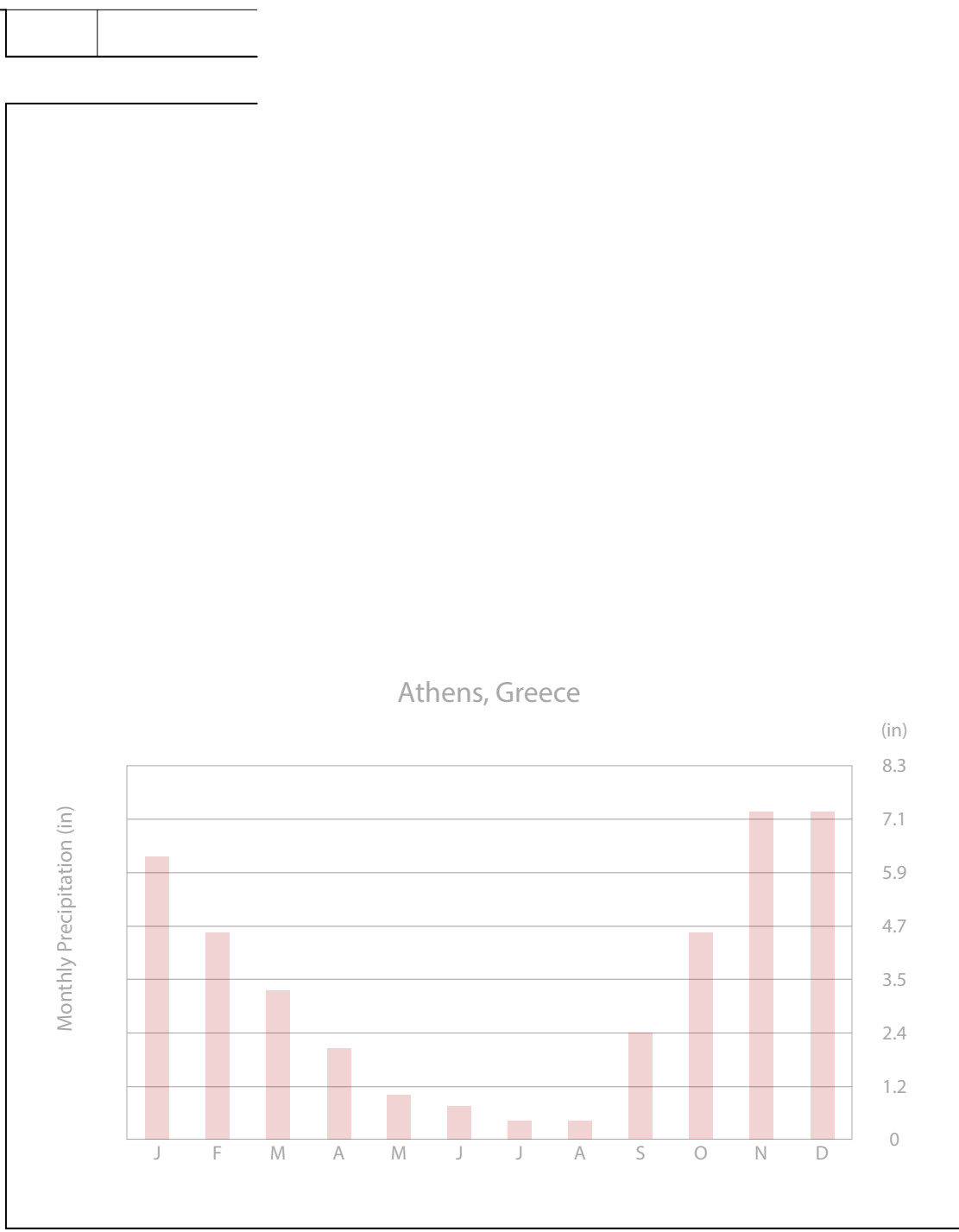
S

E

W

N

Sun Path



Cistern Diagram







Farm
FRESH
VEGETABLES





